

CIRCLE

*of*

H  PE

*Honoring our legacy*  
*Celebrating our future*

---

Thursday, November 4, 2021

We honor the people  
who inspire us every day.

We are proud to support Pennsylvania Women Work and the 20th Annual Circle of Hope Awards. Congratulations to this year's honorees as we recognize our own Mariamo Abdi as one of the Woman of Courage Award honorees.

**UPMC**  
LIFE CHANGING MEDICINE

**UPMC HEALTH PLAN**



# From our Executive Director



Dear Friends,

Welcome to the 20th annual celebration of the Circle of Hope. **Tonight, we honor the legacy of our organization and the thousands of women and job-seekers we have had the privilege of walking with on their journey to economic self-sufficiency.** The Circle of Hope is a celebration of those who have overcome incredible odds to achieve success and stability. The resilience, determination, and persistence of our current and past honorees continue to inspire us. Our clients and their stories are our greatest legacy.

As we look back on the success of so many women, we acknowledge that we wouldn't be where we are today without our devoted leaders, board members, staff, instructors and countless volunteers. Their dedication and steadfast work to empower women and further our mission of transforming lives through meaningful employment is a crucial piece of our legacy.

Tonight, we celebrate those that have rebuilt their lives and found a brighter tomorrow. **However, as we look to the future, there is still much work to be done.** Our community is struggling to recover from the ongoing pandemic – which impacted women and at-risk communities the hardest.

PA Women Work is a resource and a helping hand for individuals who are unemployed, looking for a better job, or struggling to make ends meet. As the workforce landscape continues to change, we will be here – partnering with community organizations, and employers – supporting job-seekers on their path to finding family-sustaining employment with our personalized career coaching programs, mentorship and services.

To those that have already provided your generous support, our volunteers, donors, sponsors and funders, thank you for believing in our mission. I also want to acknowledge all the individuals that made tonight possible, we appreciate your hard work, kindness and assistance.

We are honored that you are with us tonight. I invite you to join us in transforming lives. It will take all of us, as a community, to make a difference. But we can do it together.

With appreciation,

A handwritten signature in black ink that reads "Kristin Ioannou". The signature is written in a cursive, flowing style.

*Kristin Ioannou, Executive Director*



# PENNSYLVANIA WOMEN WORK

## WHO WE ARE

We are a nonprofit workforce development organization dedicated to transforming the lives of individuals through empowerment, employment and economic independence.

## WHAT WE DO

Whether it's a single mom struggling to provide for her family; a woman re-entering the workforce after 20 years; an immigrant adjusting to a new life; or someone faced with a challenging career transition; Pennsylvania Women Work is here to help lead individuals toward financial independence through critical programming and one-on-one support.



[www.pawomenwork.org](http://www.pawomenwork.org)





*20th Annual Circle of Hope*  
*A Pennsylvania Women Work virtual event*  
**Thursday, November 4, 2021**

**7-7:25 p.m. | POP Trivia**

If you opted in for our virtual game room, click the link emailed to you and join your friends and colleagues to play trivia and network.

**7:30-8 p.m. | Event Presentation**  
<https://pawomen2021.givesmart.com>

After trivia, join us for the main event. During our presentation, be inspired by the strength and resilience of women who have found success thanks to the involvement of friends like you.

---



## *Bid high. Bid often!*

Don't miss your chance to bid on some amazing items in our **SILENT AUCTION**, including Pittsburgh Penguins tickets, getaways, Broadway shows and more!



## *Win, win, win!*

Participate in our **RAFFLES** for your chance to win a Louis Vuitton Handbag or an Apple Watch. We'll announce the winners on Facebook Live tonight after the event ends! Join us at [Facebook.com/PAWomenWork](https://www.facebook.com/PAWomenWork).

# Circle of Hope Award



**Cindy Penney**  
VP of Talent, Technology,  
and Corporate HR  
*Howmet Aerospace*

As the VP of Talent, Technology, and Corporate HR at Howmet Aerospace, Cindy leads a range of HR functions and supports Corporate Resource units and Employee Resource Groups. Additionally, she is accountable for strategy, development and continuous improvement of the Human Capital Management System; developing Talent Acquisition and career growth for critical roles; leadership coaching; and initiating diversity and inclusion initiatives within the organization.

Prior to her current position, Cindy held various diversity, talent development, people operations and HR leadership roles at British Broadcasting Corporation, Royal Mail, Business in the Community, Sainsburys, and American Medical International. Cindy is originally from England. She now lives in Pittsburgh, PA, and in addition to her career, is a proud mother and wife.



**Howmet Aerospace Foundation** invests in science, technology, engineering and mathematics (STEM) education outreach, technical education programs and workforce development initiatives, with a goal of increasing the access of underrepresented communities to STEM disciplines. It is an independently endowed foundation which directs a significant portion of its grantmaking each year to nonprofit organizations in communities around the world to develop partnerships and strategies that address community needs and interests where Howmet Aerospace has operating facilities as well as to enhance Howmet's inclusive work environment by investing in programs that support diversity and inclusion.

Howmet Aerospace is a leading global provider of advanced engineered solutions for the aerospace and transportation industries. For more information, visit [www.howmet.com/foundation](http://www.howmet.com/foundation).

# Empowerment Award

Each year at the Circle of Hope, we have honored outstanding clients who have overcome incredible odds to achieve success.

**These awardees are part of our legacy** and we are proud to have been part of their journey.

**As we look toward the future**, to be more representative of all of the job seekers we serve, we have renamed the Woman of Courage Award to the Empowerment Award. We will continue to recognize clients who inspire us each year with their strength, resilience and accomplishments through this award. This year, **we are pleased to honor Jen James, Mariamo Abdi and Nina Santa.**

Join us for tonight's presentation to watch their full stories.

## Jen James

As the COVID-19 pandemic set in, Jen James experienced hardship after hardship. Their life began to spiral, and after getting laid off, they felt more alone than ever. Jen was referred to Pennsylvania Women Work by a caring friend who thought the organization could help. Jen participated in New Choices and Customer Service First-Class where they gained valuable skills and, most importantly, discovered a community of other individuals experiencing some of the same obstacles and challenges as them. PA Women Work helped Jen combine their passion for theater with their professional skillset, and they landed a job as the General Manager at the Dormont Hollywood Theater.





# Mariamo Abdi

A refugee from Tanzania, Africa, Mariamo married young and quickly became a mother of three girls. Her marriage was difficult and unhealthy. Pregnant with a fourth child, she bravely decided to leave her husband and move to Pittsburgh with her three daughters to be close to family. Without any money or a job, Mariamo began to worry how she would ever support herself and her girls. She discovered Pennsylvania Women Work where she was introduced to a paid training program through UPMC. Following her training and the birth of her fourth daughter, Mariamo was hired full-time as a Patient Care Technician at UPMC Mercy Hospital – a job she never envisioned for herself. Now, she plans to continue her education and buy a house for her and her girls.



# Nina Santa

Nina graduated from the Community College of Allegheny County in May 2020 – during the heart of the COVID-19 pandemic. After taking all the right steps, she was frustrated in her job search and struggling to find the right employment opportunity to fit her needs. She learned about 3 Cups of Coffee GRAD and hoped it would help her build a career plan.

After being connected to her mentor, Tabatha, she learned valuable skills that helped her find a job she loves as a behavioral therapist. The guidance she received through the program was invaluable.



# *2021 Circle of Hope Sponsors*

## EXECUTIVE

Howmet Aerospace



## CAREER

PNC Bank

UPMC and UPMC Health Plan

## TRAINING

CentiMark

Gateway Health Partners

Highmark Blue Cross Blue Shield

Jones Day

KeyBank

Partners Operating Platform

Peoples Natural Gas

## EMPLOYER

84 Lumber

PandoLogic

PJ Dick Trumbell Lindy Group LLC

# 2021 Circle of Hope Donors

<i>Above All Grand</i>	<i>Carla E. Frost</i>	<i>Pittsburgh Glass Center</i>
<i>Salon &amp; Spa</i>	<i>Gervasi Vineyard</i>	<i>Pittsburgh Magazine</i>
<i>Acorn</i>	<i>Leslye Herrmann</i>	<i>Pittsburgh Opera</i>
<i>Andy Warhol Museum</i>	<i>Kristin &amp; Chris Ioannou</i>	<i>Pittsburgh Penguins</i>
<i>Anonymous</i>	<i>Nicole Ioannou</i>	<i>Foundation</i>
<i>Bar Marco</i>	<i>Jen James</i>	<i>Pittsburgh Pirates</i>
<i>Bark &amp; Gold</i>	<i>JuJu Foundation</i>	<i>Pittsburgh Steelers</i>
<i>Photography</i>	<i>Amy Kaminski</i>	<i>Point Park University</i>
<i>Birdsfoot Golf Club</i>	<i>Kentuck Knob</i>	<i>PromoWest Productions</i>
<i>Bountiful Foods &amp; Gift</i>	<i>Julie &amp; Mike Lally</i>	<i>Lauren &amp; Craig</i>
<i>Baskets</i>	<i>Larrimor's</i>	<i>Riegelnegg</i>
<i>BRGR</i>	<i>Deborah Lee</i>	<i>Rivers of Steel Heritage</i>
<i>Capital Genealogy</i>	<i>Kristi Lisbon</i>	<i>Corporation</i>
<i>Carabella</i>	<i>Meadows Casino</i>	<i>Rocky Gap Casino</i>
<i>Carnegie Museums of</i>	<i>Mount Airy Casino</i>	<i>Resort &amp; Golf</i>
<i>Pittsburgh</i>	<i>Resort</i>	<i>Joyce Rollins</i>
<i>Carnegie Science Center</i>	<i>Mountaineer Casino</i>	<i>Terri Scalise Hamm</i>
<i>Caroselli Beachler &amp;</i>	<i>Nemacolin Resort</i>	<i>Senator John Heinz</i>
<i>Coleman</i>	<i>North Shore Tavern</i>	<i>History Center</i>
<i>CentiMark Foundation</i>	<i>Oakmont Bakery</i>	<i>Skydive PA</i>
<i>Children's Museum of</i>	<i>Off the Hook</i>	<i>Skytop Lodge</i>
<i>Pittsburgh</i>	<i>OMNI Resorts: The</i>	<i>Sognatore Salon</i>
<i>Christian W. Klay</i>	<i>Omni Homestead</i>	<i>Stonewater Salon</i>
<i>Winery</i>	<i>Original Oyster House</i>	<i>and Spa</i>
<i>Climb North</i>	<i>Orr's Jewelers</i>	<i>Susan &amp; Richard</i>
<i>Ebony Dendy</i>	<i>PA Women Work Board</i>	<i>Showalter-Bucher</i>
<i>Denise Dyni</i>	<i>&amp; Staff Members</i>	<i>Totteridge Golf</i>
<i>East End Brewing</i>	<i>Painting With A Twist</i>	<i>Course</i>
<i>Company</i>	<i>Jill Patterson</i>	<i>University of</i>
<i>Eighty Acres</i>	<i>Penn Brewery</i>	<i>Pittsburgh</i>
<i>First Tee</i>	<i>Pennsylvania</i>	<i>WESCO International</i>
<i>Forsythe Miniature Golf</i>	<i>Macaroni Co.</i>	<i>Dana Whatley Smith</i>
<i>Fort Ligonier</i>	<i>Phipps Conservatory</i>	<i>Julie Wiles</i>
<i>The Foundry Table &amp;</i>	<i>and Botanical Gardens</i>	<i>Valerie Williams</i>
<i>Tap</i>	<i>Pierogies Plus</i>	<i>Matthew &amp; Sharon</i>
<i>The Frick Pittsburgh</i>		<i>Wolf and Friends</i>

**AVALOTIS**

# 2021 Event Committee

## HONORARY EXECUTIVE COMMITTEE

**Kristen Bell**  
*Senior Director of Human Resources*  
Comcast

**Tami Minnier**  
*Chief Quality Officer*  
UPMC

**Evan Frazier**  
*President and CEO*  
The Advanced Leadership Institute

**Wendy O'Brien**  
*Senior Vice President, Regional Sales Manager*  
PNC Investments

**Carla E. Frost**  
*Vice President/Diversity, Equity & Inclusion*  
*Champion*  
KeyBank

**Jill Patterson**  
*Director, Client Success*  
PandoLogic

**Mary Lee Gannon**  
*President*  
St. Margaret Foundation

**Kathy Slencak**  
*Manager of Public Relations*  
CentiMark Corporation, CentiMark  
Foundation

**Vicki Henn**  
*Executive Vice President, Chief Human*  
*Resources Officer*  
PNC Bank

**Erin Weber**  
*Vice President, The Weber Group*  
Hefren-Tillotson

**Julie Marx-Lally**  
*Former CEO*  
Pennsylvania Women Work

**Melissa Stephens Williamson**  
*Chief Operating Officer &*  
*Chief Financial Officer*  
HM Health Solutions

## EVENT COMMITTEE CHAIR

**Beth Bodner**  
*Vice President, Global Audit*  
American Eagle Outfitters

## EVENT COMMITTEE

<b>Dana Calhoun</b>	<b>Leigha Pertz</b>
<b>Ebony Dendy</b>	<b>Joyce Rollins</b>
<b>Denise Dyni</b>	<b>Nicole Sharp</b>
<b>Laura Gauger</b>	<b>Kathy Slencak</b>
<b>Edie Hartman</b>	<b>Matthew Swiger</b>
<b>Robin Kiel McDonnell</b>	<b>Dana Whatley Smith</b>
<b>Kristi Lisbon</b>	<b>Julie Wiles</b>
<b>Jill Patterson</b>	<b>Sharon Zemel</b>



# Board of Directors

## EXECUTIVE COMMITTEE

**Leslye Herrmann**  
*President of the Board*  
UPMC

**Nicole King Yohe**  
*Vice President of the Board*  
FirstEnergy

**Val Williams**  
*Finance Chairwoman*  
Duquesne University

**Amanda Cole, MBA, SPHR**  
*Secretary of the Board*  
WESCO International, Inc.

## MEMBERS

**Beth Bodner**  
American Eagle Outfitters

**Ebony Dendy**  
University of Pittsburgh

**Dawna Fisher**  
First National Bank

**Summer Craze Fowler**  
Argo AI

**Hollie Geitner**  
Duquesne Light Co.

**Jazmine Grant**  
PNC Bank

**Cynthia Hill**  
PA Women Work Alum

**Meredith Klein**  
Brunner

**Brian Neidhardt**  
PNC Bank

**Marcia Oglan**  
Highmark Health

**Mavis Rainey**  
Oakland Transportation Management  
Association

**Julie Wiles**  
FedEx Corporation

# PA Women Work Staff

**Kristin Ioannou**  
Executive Director

**Susan Showalter-Bucher**  
Deputy Director

**Karen Connor**  
Office Manager

**Elizabeth Holmes**  
Data & Compliance Manager

**Nora Lopez Cruz**  
Communications & Development  
Specialist

**Dianne Mettrick**  
Finance Manager

**Lauren Riegelneegg**  
Development Director

**Mary Saula**  
3 Cups of Coffee Program Specialist

**Kristen Tsapis**  
Program Manager

**Abby Swalga**  
Senior Communications Manager

**Taneshya Williams**  
Senior Program Manager,  
3 Cups of Coffee

**Sharon Wolf**  
Grants Manager

# Corporate Advisory Committee

**Ronke Adebajo**  
*PNC Bank*

**Tanya Barker**  
*Cabi*

**Kristen Bell**  
*Comcast*

**Maria Bethel**  
*City of Pittsburgh, Dept. of Public  
Safety*

**Tammy Bey**  
*BNY Mellon*

**Maureen Blayney**  
*Marsh USA, Inc.,  
Mercer HR Consultants*

**Jody Bradel**

**Dana Calhoun**

**Anna Card**  
*Giant Eagle*

**Sharon Czewski**  
*UPMC Health Plan*

**Elizabeth Dennis**  
*Workforce Development Global  
Alliance*

**Mona Dine**  
*U.S. Steel*

**Kayla Druga**  
*Arconic*

**Denise Dyni**  
*Deloitte Services LP*

**Sheila England**

**Andrea Finch**  
*Sulter Ventures*

**Carla E. Frost**  
*KeyBank*

**Laura Gauger**  
*JP Morgan Chase*

**Myla Granadino**  
*Highmark*

**Jennifer Greevy**  
*Write Results, LLC*

**Lisa Hart**  
*BNY Mellon*

**Edie Hartman**  
*Specialty Group*

**Stephany Hartstirn**  
*UPMC Health Plan*

**Amy Kaminski**  
*Mulberry Public Affairs LLC*

**Anne Kauffman**  
*Peoples Natural Gas*

**Debra Killmeyer**  
*Community College of Allegheny County*

**Mark Kirby**  
*Office of Vocational Rehabilitation*

**Cheryl Kleppner**  
*TE Connectivity*

**Sharon Kolarac**  
*Oracle*

**Lindsey Kurtz**  
*PNC Bank*

**Kristi Lisbon**  
*Hydro Norsk*

**Angela Longo**

**Cathy Mary**  
*AEC Group, Inc.*

**Eloise McClaine**  
*BrightTree Studios*

**Lindsay McIntosh-Yeomans**  
*BNY Mellon*

**Nichole McQuaide**  
*Hefren-Tillotson*

**Sharon Menchyk**  
*Bowles Rice LLP*

**Amanda Neatrou**  
*Robert Morris University*

**Evelyn Newsome**

**Tony Panaiia**  
*Eat'n Park Hospitality Group*

**Sandy Pappa**  
*Buck Global LLC*

**Jill Patterson**  
*PandoLogic*

**Patricia Perhas**  
*PNC Bank*

**Jamie Reese**

**Megan Roppo**

**Jamie Scarano**  
*Children's Hospital of Pittsburgh*

**Marsetta Schweiger**  
*Marsetta Lane Staffing*

**Nicole Sharp**  
*Allegheny County Dep. of  
Human Services*

**Kathy Slencak**  
*CentiMark*

**Dana Whatley-Smith**  
*Duquesne University*

**M. Shernell Smith**  
*Carnegie Mellon University*

**Sharon Standish**  
*Bayer Pharmaceuticals Radiology  
Division*

**Thomas Steele**  
*Wesley Family Services*

**Arzella Stewart-McCauley**  
*Young, Gifted and Black*

**Mary Ellen Sullivan**

**Adam Vranesevic**  
*BNY Mellon*

**Diamonte Walker**  
*Urban Redevelopment Authority  
of Pittsburgh*

**Patricia Winter**  
*Carnegie Library of Pittsburgh*

**Harriet Wortzman**  
*University of Pittsburgh, School of  
Education*

**Gina Zanardelli**  
*Chatham University*

**Michelle Zappa**  
*Peoples Natural Gas*



# Make a gift. Change a life.

Your support matters. Every gift you make tonight – no matter the size – enables a critical step on a woman's path to family-sustaining employment.

## Here's how your generous donation can go to work:

\$2,500 sponsors a career development class for ten clients

\$1,000 sponsors a life-changing mentorship

\$500 sponsors a career growth workshop

\$250 sponsors a resume update for a client

\$100 sponsors new professional attire

\$50 sponsors a pre-interview haircut

\$25 sponsors a bus pass to an interview

Women in our community need your support more than ever, and you can be part of their success story. Your gift makes possible another step towards a brighter tomorrow.

*Make your gift online on our event platform or by mailing a check to Pennsylvania Women Work at: 650 Smithfield Street, Suite 520, Pittsburgh, PA 15222.*



***Sponsors  
&  
Supporters***



# CentiMark Corporation

Proudly Supports

PENNSYLVANIA

**W**omen  
**W**ork



**CENTI**M**ARK<sup>®</sup>**

[CentiMark.com](http://CentiMark.com)

[QuestMarkFlooring.com](http://QuestMarkFlooring.com)



*Solutions that make  
pharmacy management simpler.*



**Gateway**  
HEALTH PARTNERS



We congratulate  
**Pennsylvania Women Work**  
2021 Circle of Hope awardees.

You empower. You support. You improve lives.



[HIGHMARKBCBS.COM](https://www.highmarkbcbs.com)

Highmark Blue Cross Blue Shield is an independent licensee of the Blue Cross and Blue Shield Association.



# ONE FIRM WORLDWIDE®

Jones Day proudly supports Pennsylvania Women Work's 20th Annual Circle of Hope Virtual Celebration. We applaud their mission: to transform women's lives through empowerment, employment, and economic independence.

**Why Jones Day? A true partnership based on communication, collaboration, conviction, and talent across specialties and jurisdictions.**







---

# We're cheering you on.

KeyBank is proud to support Pennsylvania Women Work's 20th Anniversary **Circle of Hope** Awards. Congratulations to all **Circle of Hope** Awardees.

---

“Success is to be measured not so much by the position that one has reached in life as by the obstacles which they have overcome.”

–Booker T. Washington

---



©2021 KeyCorp. **KeyBank is Member FDIC.** 211005-1283528





# Partners Operating Platform

*proudly supports*

Pennsylvania Women Work.



[www.pop2.net](http://www.pop2.net)



# WE'VE GOT GREAT ENERGY!

It's an exciting time to be working in energy. Our passion is providing resources that are reliable, safe and life-sustaining, but this isn't possible without the power of our workforce.


## AT PEOPLES, OUR EMPLOYEES RECEIVE:

- ✓ Competitive salary, annual bonus programs, employee stock purchase program
- ✓ Comprehensive benefits package, including medical, dental and vision coverage
- ✓ Vacation, paid holidays, sick pay, life insurance, long-term disability insurance, retirement plans and more
- ✓ Employee resource groups celebrating diversity, military status, wellness and volunteerism

Apply today at [peoples-gas.com/careers](https://peoples-gas.com/careers)



PEOPLES™

An  Essential Utilities Company

Celebrating diversity, empowerment, and employment with  
**PENNSYLVANIA WOMEN WORK.**



Proud sponsor of the  
**20TH ANNUAL  
CIRCLE OF HOPE  
AWARDS DINNER**

 **PJ DICK | TRUMBULL | LINDY GROUP**

**LET'S BUILD.**

A Drug-Free Equal Opportunity Employer



## **84<sup>®</sup> LUMBER**

For nearly 65 years, 84 Lumber has been building on its legacy of creating, shaping and maintaining the American dream for professional builders and passionate do-it-yourselfers. As the nation's largest privately held building materials supplier for single- and multi-family residences and commercial buildings, its 250 locations nationwide offer the highest quality lumber, name-brand windows and doors, custom millwork, kitchen and bath design, turnkey installation services and more. For more information, visit [84lumber.com](http://84lumber.com) or join us at [Facebook.com/84lumber](https://www.facebook.com/84lumber) and [linkedin.com/company/84-lumber](https://www.linkedin.com/company/84-lumber).

**84LUMBER.COM**



**PandoLogic**  
is proud to support  
Pennsylvania Women  
Work.

---

*Congratulations to all of  
tonight's awardees.*



[www.pandologic.com](http://www.pandologic.com)





## The following supporters made tonight's video presentation possible:

- Barrowman Photography & Videography
- The Pittsburgh Cultural Trust
- Heather Tabacchi Photography
- The Hollywood Theater
- Howmet Aerospace



# Congratulations!

Jen James, Mariamo Abdi and Nina Santa  
*2021 Empowerment Awardees*

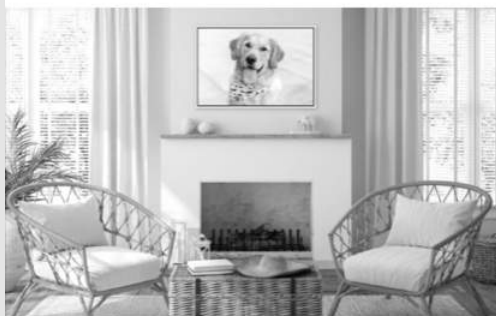
Celebrating this year's honorees and the dedicated staff at  
Pennsylvania Women Work.

*Mary Lee Gannon was recognized as our 2016 Honorary Woman of Courage.*



MARYLEE  
Executive Coaching  
[www.MaryLeeGannon.com](http://www.MaryLeeGannon.com)

 *Bark & Gold*  
PHOTOGRAPHY



*Celebrating the joy and love between  
Pittsburgh pets and their people through  
signature wall art, fine art albums, and  
other heirloom products*

[www.barkandgoldphotography.com](http://www.barkandgoldphotography.com)  
[jessica@barkandgoldphotography.com](mailto:jessica@barkandgoldphotography.com)  
724-913-BARK (2275)



[WWW.CARABELLAOAKMONT.COM](http://WWW.CARABELLAOAKMONT.COM)  
412-828-2187 • 328 Allegheny River Boulevard Oakmont, PA 15139







Proud to support  
PA Women Work

*Congratulations  
to the awardees!*



*Bountiful Foods  
and Gift Baskets*

Kathy Badaracco and  
Tammy Fritts  
Phone 412-874-1536  
Fax 412-369-7056

bountifulfoodsandbaskets@comcast.net  
www.bountifulfoodsandgiftbaskets.com



HEATHER  
TABACCHI

PHOTOGRAPHY

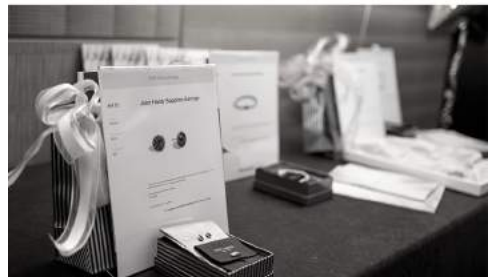
**COUTURE PORTRAITS**

FAMILY - GENERATIONS - HEADSHOTS

**412.926.9736**

**WWW.HEATHERTABACCHI.COM**

**THANK YOU  
TO ALL OF OUR  
SILENT  
AUCTION  
DONORS  
FOR MAKING  
THIS CRITICAL  
PIECE OF OUR  
EVENT A  
SUCCESS!**





***Thanks  
&  
Appreciation***



# *Thank you to our funders*

*Allegheny County Bar Foundation*

*American Eagle Outfitters  
Foundation*

*Ameriprise Financial*

*Arconic Foundation*

*Bank of America Foundation*

*Brooks Foundation Educational  
Distribution Trust through PNC  
Charitable Trusts*

*Duquesne Light Company*

*Elsie H. Hillman Foundation*

*Essential Foundation  
(Peoples Natural Gas)*

*FedEx Ground*

*FirstEnergy Foundation*

*G.C. Murphy Company  
Foundation*

*Highmark Blue Cross Blue Shield*

*Howard and Nell E. Miller  
Foundation*

*Marinus and Minna B. Koster  
Foundation*

*Jack Buncher Foundation*

*J.Jill Compassion Fund,  
a donor advised fund of the Boston  
Foundation*

*Ju Ju Foundation*

*Nina Baldwin Fisher Foundation*

*Pennsylvania Department of Labor  
and Industry*

*Pitcairn-Crabbe Foundation*

*PNC Community Development*

*Robert S. and Louise S. Kahn  
Foundation*

*Snee-Reinhardt Charitable  
Foundation*

*The Pittsburgh Foundation*

*Thrivent*

*United Way of Southwestern  
Pennsylvania*

*UPMC Health Plan*



TO OUR  
**BOARD OF DIRECTORS**  
**CORPORATE ADVISORY COMMITTEE**  
**3 CUPS OF COFFEE MENTORS**  
**VOLUNTEERS**  
**AND ALL OF YOU THAT MAKE OUR WORK**  
**POSSIBLE**  
YOU ARE ALL LIFE  
CHANGERS

**THANK YOU!**



# Honoring Julie Marx-Lally



Thank you for your commitment to changing the lives of job-seeking women as our CEO for nearly a decade.

---



## COMPASSION FUND

IN HONOR OF JULIE MARX-LALLY

Throughout her time at Pennsylvania Women Work, Julie introduced new programs and initiatives on an ongoing basis to adapt to the community's growth and changing needs.

Earlier this year, following Julie's retirement as our CEO, we introduced The Compassion Fund in her honor.

Each year, we will allocate the funds to the area of our work or organization that needs the most support, just as Julie did with her forward thinking and creation of new services and programs.

***If you'd like to make a donation to The Compassion Fund, please visit our [Silent Auction page](#).***

# THANK YOU, DDI!

YOUR CONTINUED PARTNERSHIP WITH PA WOMEN WORK TO PROVIDE PROFESSIONAL CERTIFIED CURRICULUM TO OUR CLIENTS CHANGES LIVES EVERY DAY.



**A SPECIAL  
THANK YOU  
TO OUR NEW  
CHOICES  
FACILITATORS  
AND STATEWIDE  
DIRECTORS  
FOR ALL YOU DO  
FOR OUR CLIENTS.**



*Thank  
You!*

**TO OUR EVENT  
COMMITTEE**

**FOR ALL YOUR  
GUIDANCE,  
SUPPORT, AND  
VOLUNTEERISM!**





***Programs  
&  
Information***



# NEW CHOICES

---



New Choices is designed to give clients individualized attention and training to help each person achieve success personally and professionally. We work one-on-one and in small groups to help our clients transfer their past skills, prepare for the job market, and make professional decisions. New Choices empowers individuals and provides the skills needed to find a family-sustaining job.

# GROW

---

GROW supports individuals re-entering the workforce after incarceration or rehabilitation with critical professional development needed to get back on their feet. Using trauma-informed curriculum, participants rediscover their worth, create an attainable career plan and goals, and take steps toward rebuilding their lives.



# 3 CUPS OF COFFEE®

---



3 Cups of Coffee is a short-term mentoring program that connects job-seekers with a skilled volunteer in a similar job field. Over three meetings, the mentor helps the mentee strengthen their interview and job search skills and create a customized career plan while networking and building connections. The support and connections made through this program are life-changing.

## 3 CUPS OF COFFEE®

# GRAD

---

After earning a degree, the next step is starting a career. But the degree alone isn't enough to land employment for many college graduates. In partnership with local colleges, 3 Cups of Coffee GRAD helps upcoming graduates and alumni looking to start or improve their careers by connecting them with help from a professional mentor and networking opportunities.



# RISE

---

RISE is a career development program for immigrants and refugees that offers individualized career services, including assistance developing a professional resume, support in transferring professional skills and credentials, introductions to local and regional employers, and advice for adjusting to the American workplace.



# CUSTOMER SERVICE

---

Customer Service First-Class teaches job seekers professional communication skills transferable to any employment opportunity. Using industry-recognized curriculum provided by DDI, attendees learn to build strong working relationships and develop skills to communicate effectively in any professional situation. At course completion, participants get connected directly with local employers.



# Get involved

Help us give women new chances.



*There are so many ways to stay in our circle throughout the year. If you enjoyed Circle of Hope consider getting involved as a...*



- Volunteer
- Mentor
- Employer partner
- Donor
- Corporate Advisory Committee member
- Member of our events committee



For more information on how to get involved, contact  
Lauren Riegelnegg  
[lriegelnegg@pawomenwork.org](mailto:lriegelnegg@pawomenwork.org).



PENNSYLVANIA  
**Women  
Work**





We're helping to  
raise up communities.

At PNC Community Development Banking, we work together with nonprofit organizations and other dedicated groups to provide financial solutions that change lives for the better and raise up the people, businesses and communities we so proudly serve.

For more information:  
Bethany Davidson  
Community Development Specialist  
[bethany.davidson@pnc.com](mailto:bethany.davidson@pnc.com)  
412-762-4949

Your Community Development Banker  
[pnc.com/communitydevelopmentbanking](http://pnc.com/communitydevelopmentbanking)



©2021 The PNC Financial Services Group, Inc. All rights reserved.  
PNC Bank, National Association. **Member FDIC**

FIN ED 1016-098-393202

Together,  
we empower women  
to give their careers  
flight.

Howmet Aerospace proudly supports  
Pennsylvania Women Work



**HOWMET  
AEROSPACE**

[www.howmet.com](http://www.howmet.com)